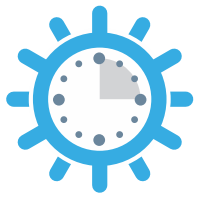







300~1000VA - Your personal roof top solar power generators



## Power your home for upto 8 hours \*

Shown is a typical household load of 800 w

	1 x 200W Computer
	1 x 150W Televisions
	4 x 40W Tubelights
	5 x 10W CFL bulbs
	4 x 60W Ceiling fans



### FEATURES

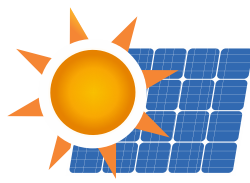
- Proven, long-lasting modules with consistent power output for 25 years
- Low maintenance, long-life batteries
- In-built electrical protection for personnel and equipment
- Wide operating temperature range from 0 to 50 °C
- Movable/fixed structure designed to withstand 150kmph wind speed\*\*

### BENEFITS

- Solar power - on demand
- Saves on fuel costs of generator set
- Smooth sine wave enables functioning of supported appliances
- Standard warranty of 1 year, extended warranty available

### COMPONENTS

- Solar array ranging from 100 to 1120 Wp
- Long-life, deep-cycle battery ranging from 75 to 180 Ah
- Safe and secure PCU ranging from 300 to 1000 VA
- PV structure with desired tilt
- Other power ratings and voltage configuration on request



## Our products in this range

	100	160	210	1100/1100
<b>FEATURES</b>				
Panel sizing	Panel sized to charge the battery			
Power output (VA)	300	1000	600/1000	1000
Recommended load and usage duration	60W for 4h	90W for 4h	120W for 4h	800W for 4h/800W for 8h
PCU output AC voltage (V)	230 +/- 5%			
Over-load capacity (for 10 secs)	5%			10%
PCU mounting (indoor)	Floor-mounted			Wall-mounted
Supply power priority	Primary: Grid, Secondary: Battery			User selectable (PV/Grid priority)
Battery charging priority	Solar + Grid			User selectable (PV/Grid priority)
Voltage operation range on AC mains (V <sub>ac</sub> )	110-270/180-260			145-260
Enhanced battery backup operation	Allows wide voltage range grid operation			Operates with built in AVR
Optional communication port (RS232/USB/Ethernet)	No			Yes
PCU status indicators	LED display			LED and backlit LCD display
Change-over time from AC mains to battery/PV (ms)	< 10			< 8
No load energy saving mode	Manual			Automatic
<b>BENEFITS</b>				
Savings from diesel consumption in a year (₹)*	9,000	18,000	18,000	27,000
<b>COMPONENTS</b>				
PV array wattage (Wp)	100	160	210	1120
12Vbattery (AhxQty.)	120x1	75x2	120x2	180x2/180x4
PCU rating (VA)	300	1000	600/1000	1000

Adityakiran is committed to enabling solar everywhere and bringing the power of the sun to people in the most efficient and cost effective way possible.

## ADITYAKIRAN

**Manufacture of Solar Panels & Supplier of LED lights & Solar Projects**

**Work:** 1413A, Gidc Waghodia-391760 Vadodara,Gujarat-india | **Mob.:** 09879746910

**Email:** info@adityakiran.co.in | **web:** www.adityakiran.co.in